

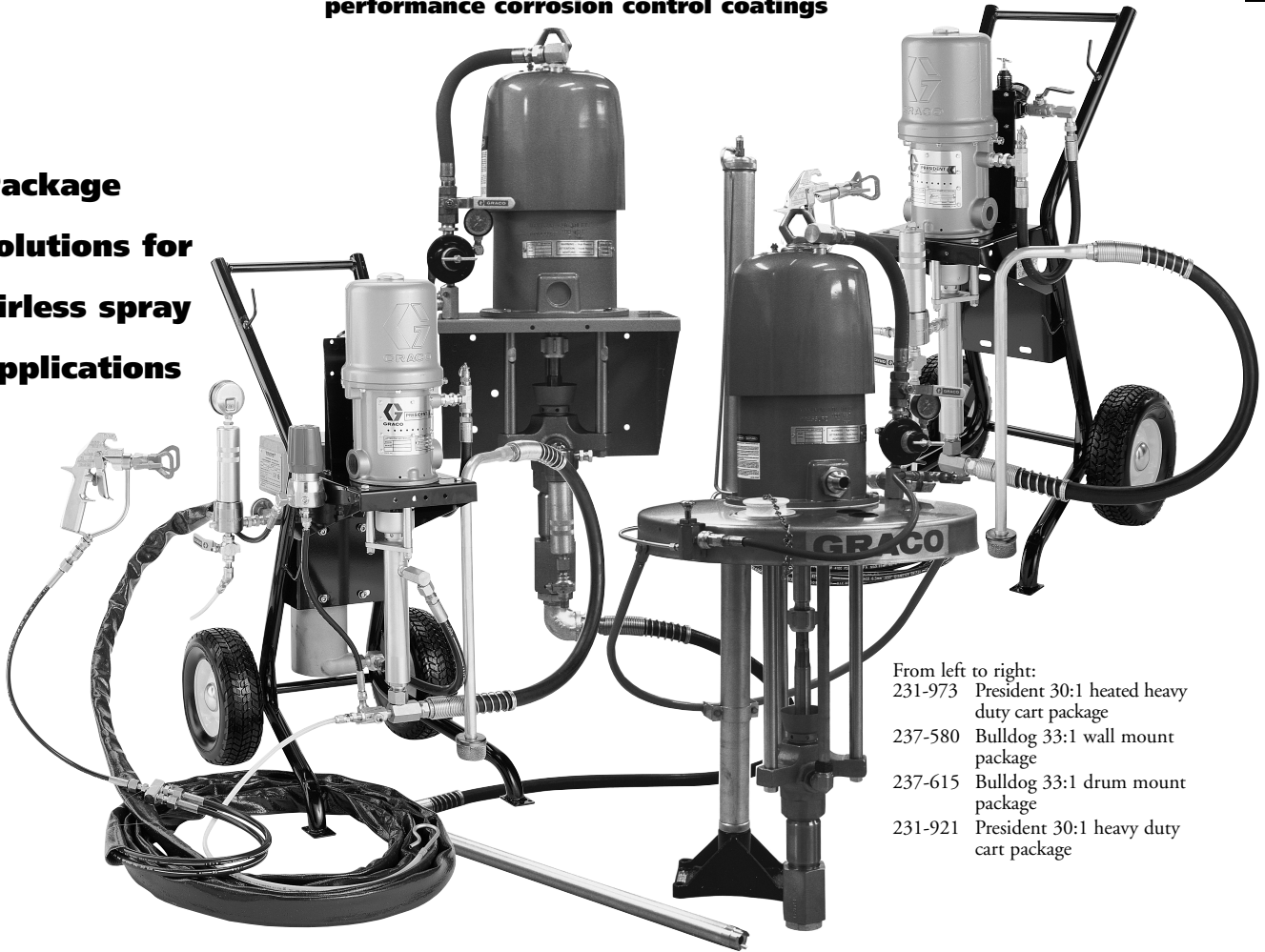


# Airless Packages High Pressure Spray Finishing

PACKAGES

- All packages completely tested and ready to spray
- Modular design, CS and SST packages available
- Pressures from 2000 psi (14 MPa, 140 bar) to 7400 psi (50 MPa, 503 bar)
- Spray a variety of fluids from conventional coatings to high performance corrosion control coatings

**Package solutions for airless spray applications**



From left to right:  
 231-973 President 30:1 heated heavy duty cart package  
 237-580 Bulldog 33:1 wall mount package  
 237-615 Bulldog 33:1 drum mount package  
 231-921 President 30:1 heavy duty cart package

Graco's high pressure airless spray packages are designed to handle the rugged environment of protective coatings applications, as well as the demanding production needs of the heavy equipment manufacturer. These units are designed to match your application needs for portability and ease of use. They are fully assembled, tested and ready to use, including spray gun, fluid whip hoses and swivel.

Graco airless sprayers combine high pressure pumping technology with a complete package design to maximize performance and durability.

### Typical Fluids Handled

- Epoxies
- Enamels
- Polyurethanes
- Waterbornes
- Alkyds

### Typical Applications

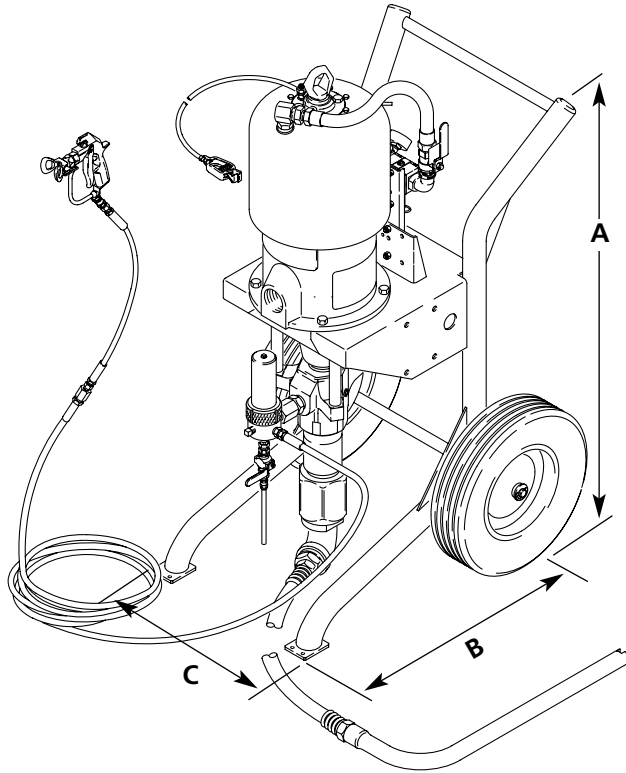
- Rail
- Tanks
- Marine
- Corrosion control
- Farm and construction
- General metal fabrication

## Technical Specifications for Airless Spray Packages

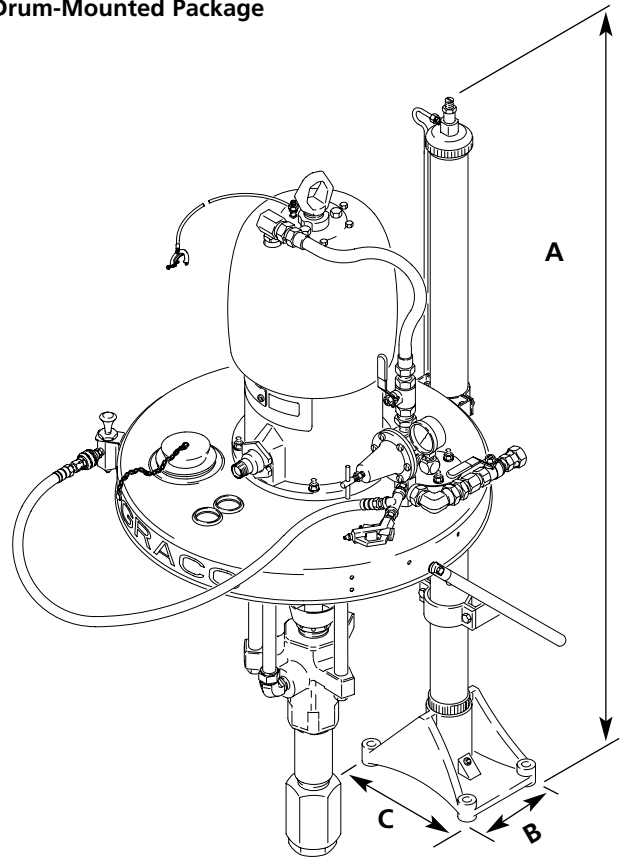
Pump Package	Max. Working Pressure psi (MPa, bar)	Max. Air Input Pressure psi (MPa, bar)	Fluid Flow at 60 cpm gpm (lpm)	Vol. per Cycle oz (cc)	Air Inlet Size	Fluid Inlet Size	Fluid Outlet Size
<b>Bulldog 33:1</b>	3300 (22.4, 224)	100 (0.7, 7)	2.9 (11.0)	6 (177)	3/4 npsm(f)	1-1/2 npt(f)	3/4 npt(f)
<b>Bulldog 41:1</b>	4100 (28.3, 283)	100 (0.7, 7)	2.3 (8.7)	4.9 (145)	3/4 npsm(f)	1-1/2 npt(f)	3/4 npt(f)
<b>President 30:1</b>	3000 (210, 21)	100 (0.7, 7)	1.0 (3.8)	2.1 (62)	3/8 npsm(f)	3/4 npt(m)	1/4 npsm(m)
<b>President 46:1</b>	4600 (32, 317)	100 (0.7, 7)	0.55 (2.1)	1.1 (32.5)	3/8 npsm(f)	3/4 npt(m)	1/4 npsm(m)
<b>Premier 45:1</b>	4500 (31.5, 315)	100 (0.7, 7)	6.9 (26.1)	14.7 (435)	1 npsm(f)	2 npt(f)	3/8 npt(m)
<b>Premier 74:1</b>	7400 (51, 510)	100 (0.7, 7)	4.2 (15.9)	8.9 (263)	3/4 npsm(f)	2 npt(f)	1 npt(f)
<b>King 20:1</b>	1800 (12.4, 124)	90 (0.6, 6)	14.4 (55)	31 (917)	3/4 npsm(f)	2 npt(f)	1-1/2 npt(m)
<b>King 28:1</b>	2520 (17.4, 174)	90 (0.6, 6)	6.9 (26.1)	14.7 (435)	3/4 npsm(f)	2 npt(f)	3/4 npt(m)
<b>King 56:1</b>	5000 (34.5, 345)	90 (0.6, 6)	3.4 (12.9)	7.25 (215)	3/4 npsm(f)	2 npt(f)	1 npt(f)
<b>King 68:1</b>	6120 (42.2, 422)	90 (0.6, 6)	2.9 (11.0)	6.1 (180)	3/4 npsm(f)	1-1/2 npt(f)	3/8 npt(m)
<b>Senator 17:1</b>	1700 (11.7, 117)	100 (0.7, 7)	3.4 (12.9)	7.25 (215)	3/4 npsm(f)	2 npt(f)	1 npt(f)
<b>Monark 23:1</b>	2300 (16, 160)	100 (0.7, 7)	0.4 (1.1)	0.85 (25)	3/8 npsm(f)	3/4 npt(m)	1/4 npsm(m)

# Dimensions

## Heavy Duty Cart-Mounted Package



## Drum-Mounted Package



PACKAGES

### Dimensions For Heavy Duty Cart Package

	A Height	B Depth	C Width	Approx. Weight
<b>Senator</b>	49.6 in (1261 mm)	30.7 in (780 mm)	26 in (660 mm)	290 lb (132 kg)
<b>Bulldog</b>	49.5 in (1257 mm)	30.7 in (780 mm)	26 in (660 mm)	265 lb (120 kg)
<b>King</b>	53.6 in (1361 mm)	30.7 in (780 mm)	26 in (660 mm)	310 lb (141 kg)
<b>Monark</b>	38.5 in (978 mm)	21 in (534 mm)	20 in (508 mm)	125 lb (57 kg)*
<b>President</b>	38.5 in (978 mm)	21 in (534 mm)	20 in (508 mm)	125 lb (57 kg)*
<b>Premier</b>	50 in (1270 mm)	34 in (864 mm)	29 in (737 mm)	365 lb (166 kg)

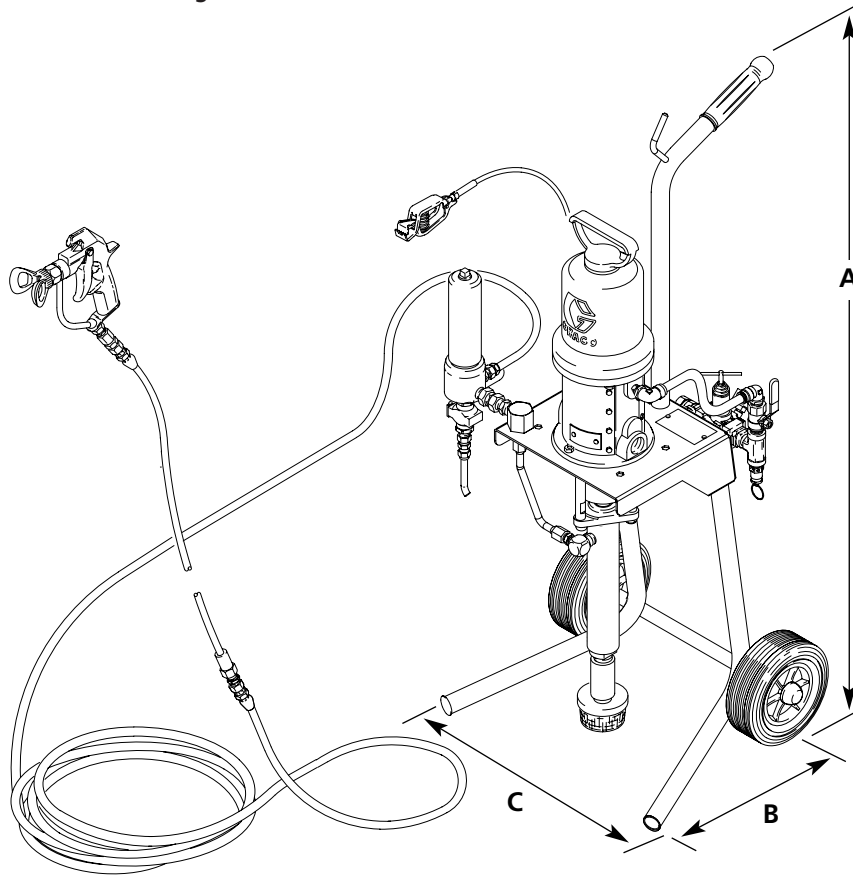
\* heated package

### Dimensions For Drum-Mounted Package

	A Height	B Depth	C Width	Approx. Weight
<b>Bulldog</b>	93.5 in (2375 mm)	30 in (760 mm)	17 in (685 mm)	275 lb (125 kg)
<b>President</b>	96 in (2436 mm)	30 in (760 mm)	17 in (685 mm)	240 lb (109 kg)

# Dimensions

## Light Duty Cart-Mounted Package

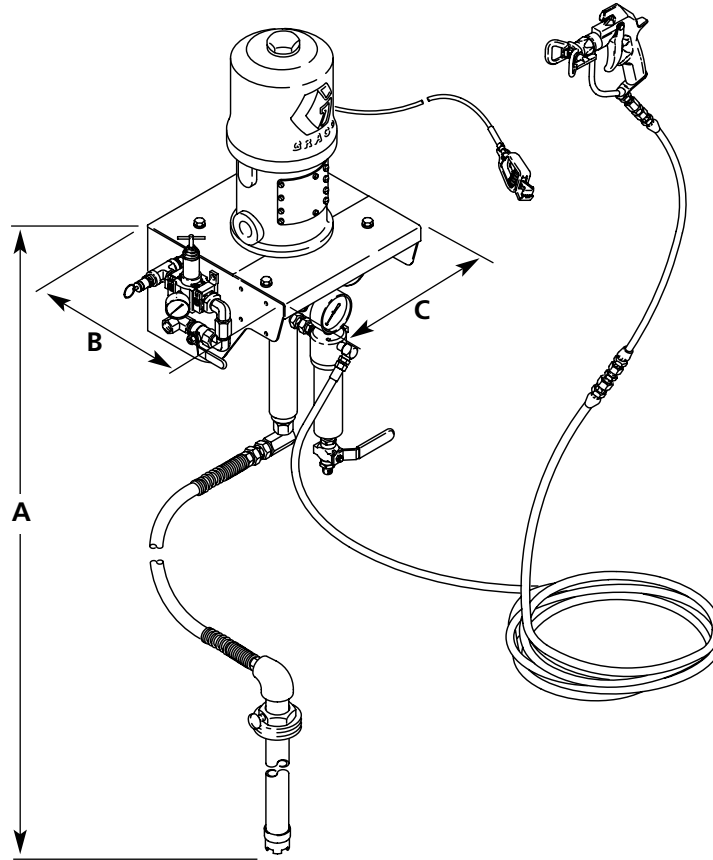


### Dimensions For Light Duty Cart Package

	A Height	B Depth	C Width	Approx. Weight
Monark	39.1 in (993 mm)	14.5 in (368 mm)	15.75 in (400 mm)	45 lb (20 kg)

# Dimensions

## Wall-Mounted Package

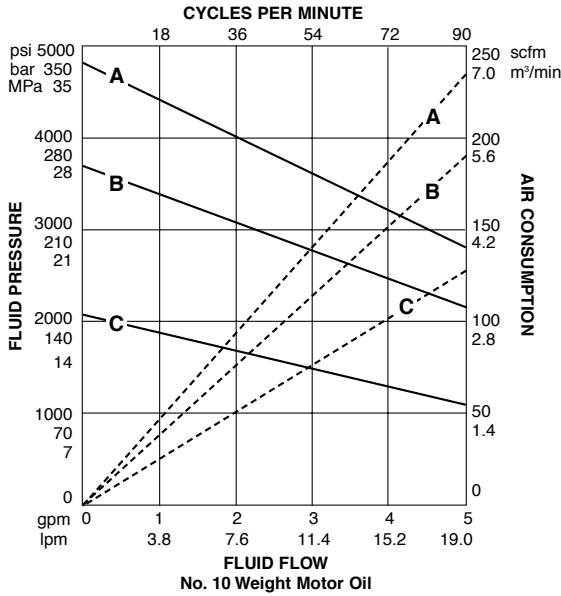


### Dimensions For Wall-Mounted Package

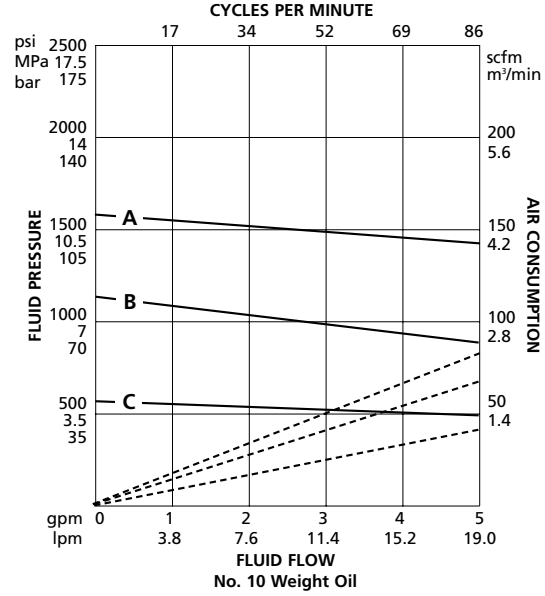
	A Height	B Depth	C Width	Approx. Weight
<b>Bulldog</b>	Max. 5 ft (1.8 m)	12.5 in (317 mm)	17.7 in (449 mm)	135 lb (61 kg)
<b>Monark</b>	Max. 5 ft (1.8 m)	7 in (178 mm)	11.5 in (292 mm)	65 lb (30 kg)
<b>President</b>	Max. 5 ft (1.8 m)	7 in (178 mm)	11.5 in (292 mm)	75 lb (34 kg)

# Performance Charts for Airless Spray Packages

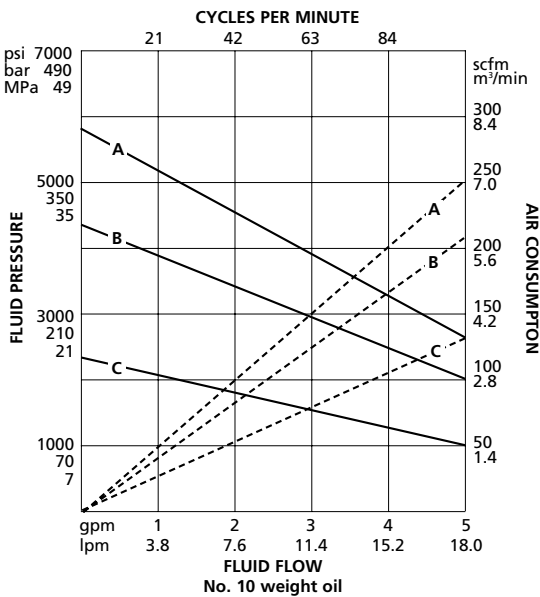
**King 56:1**



**Senator 17:1**



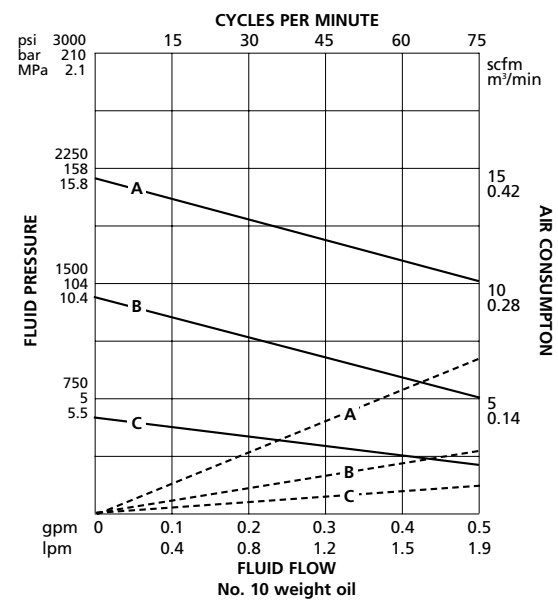
**King 68:1**



**Air Pressures:**

- A = 100 psi (0.7 MPa, 7 bar)
- B = 70 psi (0.48 MPa, 4.8 bar)
- C = 40 psi (0.28 MPa, 2.8 bar)

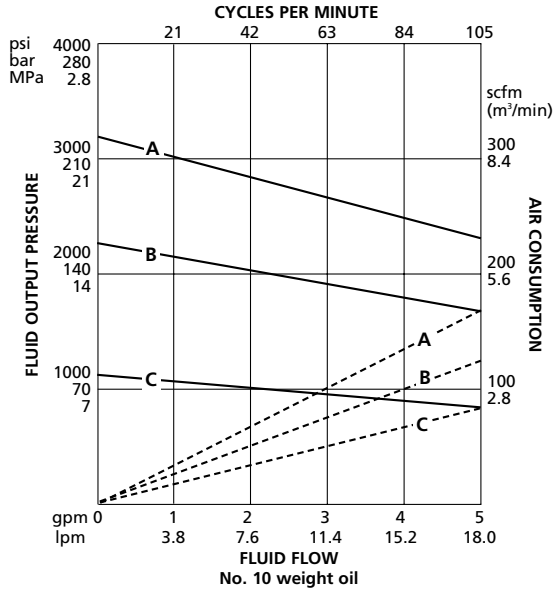
**Monark 23:1**



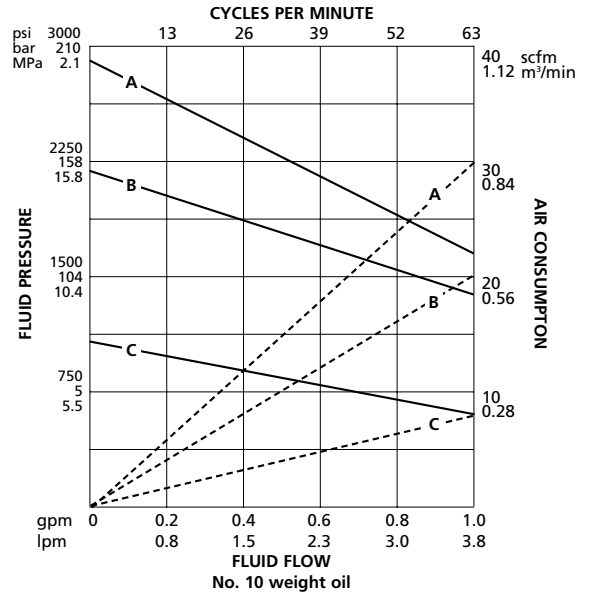
Fluid outlet pressure = solid lines  
Air consumption = dashed lines

# Performance Charts for Airless Spray Packages

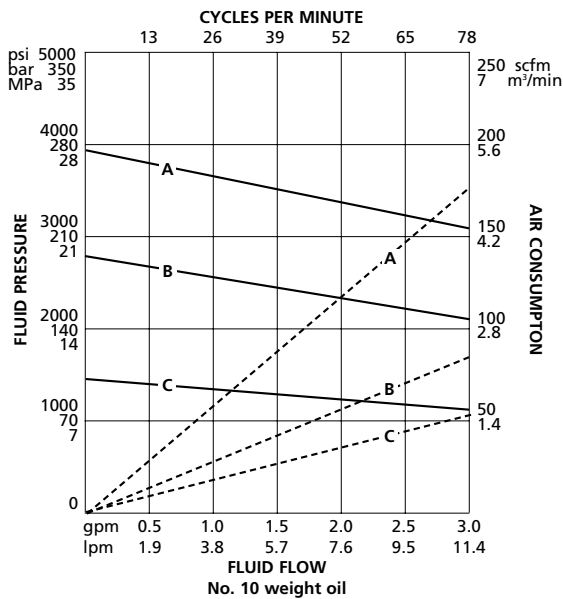
**Bulldog 33:1**



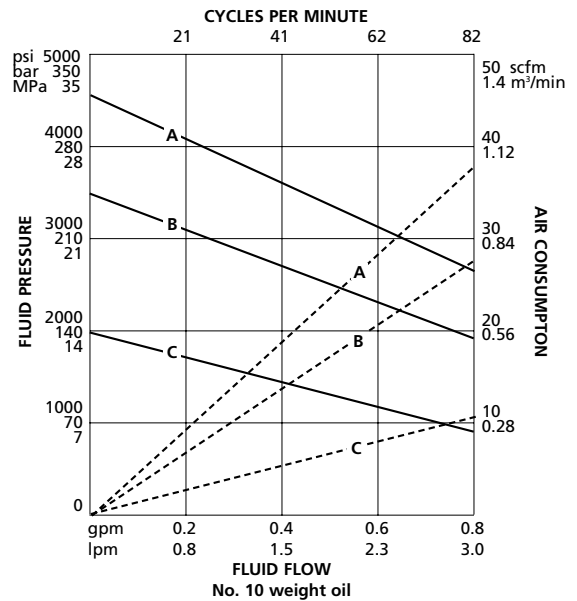
**President 30:1**



**Bulldog 41:1**

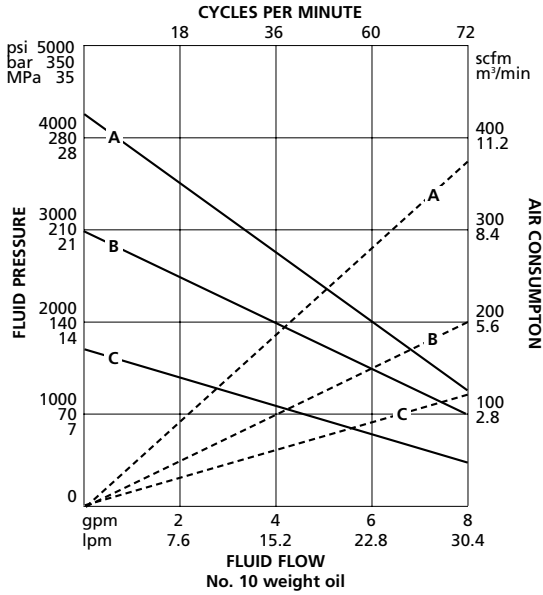


**President 46:1**

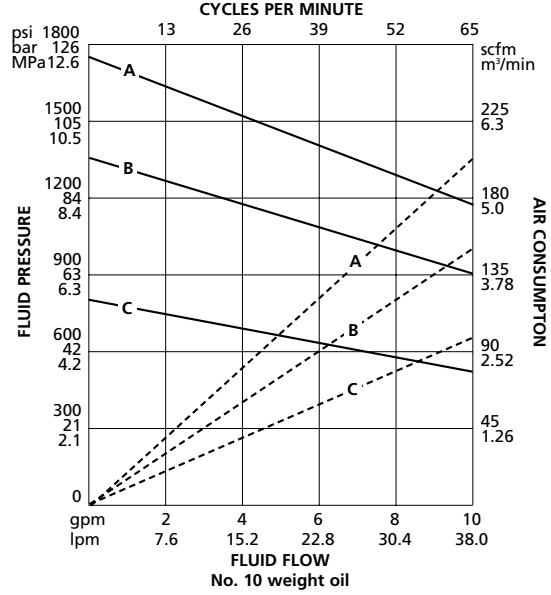


# Performance Charts for Airless Spray Packages

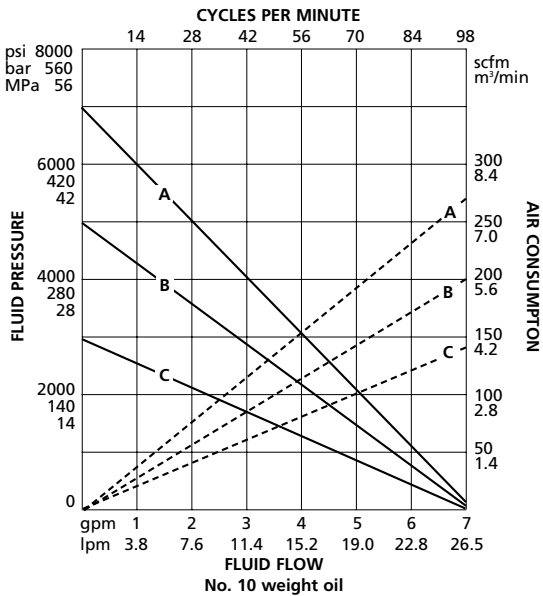
**Premier 45:1**



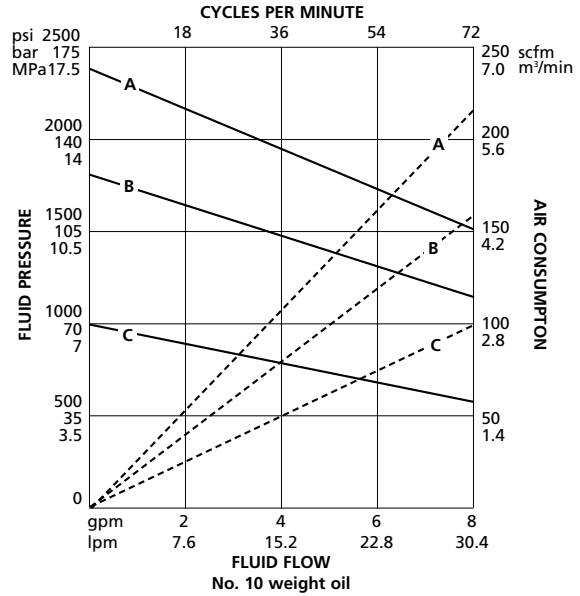
**King 20:1**



**Premier 74:1**



**King 28:1**



# Selection Guide for Airless Spray Packages

The following items are available only in North America, South America and Southeast Asia.

	Stainless Steel Construction* Part No.	Bare Pump only (B)	Heavy-Duty Cart Mount	Wall Mount	Drum Mount	Pail Mount	Light Duty Cart	Heaters (voltage)**	Quiet Air Motor	Fluid Regulator	Fluid Filter and Gauge	Elevator	Agitator	Suction Kit	Circulation Kit	Recirculation Manifold	Surge Tank	Fluid Hose Swivel	Whip Hose (2 ft., 0.6 m)	Fluid Hose (25 ft., 7.6 m)	Applicator	Instruction Manual
<b>SENATOR 17:1 Zinc</b> 1700 psi (11.7 MPa, 117 bar) 3.4 gpm (12.9 lpm)	237-293	•												•	•			•	•	•	Silver Plus	308-081
<b>BULLDOG 33:1 Zinc</b> 3300 psi (22.4 MPa, 224 bar) 2.9 gpm (11 lpm)	237-401	•												•	•			•	•	•	Silver Plus	308-081
<b>KING 20:1 Zinc</b> 1800 psi (12.4 MPa, 124 bar) 14.4 gpm (55 lpm)	231-131	•												•	•			•	•	•	Silver Plus	308-081
<b>MONARK 23:1</b> 2300 psi (16 MPa, 160 bar) 0.4 gpm (1.1 lpm)	231-940	•								F				•				•	•	•	Silver Plus	308-635
	231-941	B •								F				•								308-635
	• 231-949	•								F				•				•	•	•	Silver Plus	308-635
	231-989	•					120			F,G				•	•			•	•	•	Silver Plus	308-692
	231-990	•					240			F,G				•	•			•	•	•	Silver Plus	308-692
	231-993	•					200			F,G				•	•			•	•	50 ft.	Silver Plus	308-692
	• 232-044	•					120			F,G				•	•			•	•	•	Silver Plus	308-692
	• 232-045	•					240			F,G				•	•			•	•	•	Silver Plus	308-692
	232-222		•							F,G				•				•	•	•	Silver Plus	308-756
	232-223	B	•							F,G				•								308-756
	• 232-233		•							F,G				•				•	•	•	Silver Plus	308-756
	• 232-234	B	•							F,G				•								308-756
	232-291		•				240			F,G				•	•			•	•	•	Silver Plus	308-759
	232-292		•				480			F,G				•	•			•	•	•	Silver Plus	308-759
	• 232-379		•				240			F,G				•	•			•	•	•	Silver Plus	308-759
	232-380		•				480			F,G				•	•			•	•	•	Silver Plus	308-759
	232-411						•			F,G								•	•	•	Silver Plus	308-762
	232-412	B					•			F,G									•	•	Silver Plus	308-765
	231-942		•															•	•	50 ft.	Silver Plus	308-635

\*Stainless steel 304 or better, all wetted parts.  
All other models SevereDuty™ (SST/CS).

\*\*Voltage  
200v available in SE Asia only  
120v, 240v, 480v available in North America only

**Suction Kit:**

All HD cart packages . . . Standard 5 gal. (18.9 liter) siphon tube  
All wall packages . . . . . Standard 55 gal. (220 liter) siphon tube  
All LD cart packages . . . Optional 5 gal. (18.9 liter) siphon tube



# Selection Guide for Airless Spray Packages

The following items are available only in North America, South America and Southeast Asia.

	Stainless Steel Construction*	Part No.	Bare Pump only (B)	Heavy-Duty Cart Mount	Wall Mount	Drum Mount	Pail Mount	Light Duty Cart	Heaters (voltage)**	Quiet Air Motor	Fluid Regulator	Fluid Filter and Gauge	Elevator	Agitator	Suction Kit	Circulation Kit	Recirculation Manifold	Surge Tank	Fluid Hose Swivel	Whip Hose (2 ft., 0.6 m)	Fluid Hose (25 ft., 7.6 m)	Applicator	Instruction Manual	
<b>BULLDOG 33:1</b>																								
3300 psi (22.4 MPa, 224 bar) 2.9 gpm (11 lpm)		237-399	B •								F				•								308-476	
		237-400	B •						•		F				•								308-476	
		237-403		•							F				•			•	•	•		Silver Plus	308-476	
		237-435	B •												•								308-476	
		237-580	B	•							F,G				55g			•					307-932	
		237-581	B	•					120		F,G				•								307-932	
		237-615	B		•						F,G	•											308-478	
		238-908		•						•	F,G				•				•	•	•		Silver Plus	308-476
		238-922	B	•					240		F,G				55g								307-932	
		238-923	B	•					480		F,G				55g								307-932	
<b>BULLDOG 41:1</b>																								
4100 psi (28.3 MPa, 283 bar) 2.3 gpm (8.7 lpm)		236-465	B •								F			•										
		238-137		•							F				•			•	•	•		Silver Plus	308-475	
		238-907		•					•		F				•			•	•	•		Silver Plus	308-475	
		237-729	B •								F				•								308-475	
		237-402	B •						•		F												308-475	
<b>PREMIER 45:1</b>																								
4500 psi (31.5 MPa, 315 bar) 6.9 gpm (26.1 lpm)		222-973	B •								F			•									308-215	
		238-144		•							F				•			•	•	•		Silver Plus	308-215	
<b>KING 56:1</b>																								
5000 psi (34.5 MPa, 345 bar) 3.4 gpm (12.9 lpm)		236-477	B •								F			•									308-425	
		237-281	B •											•									308-425	
		237-285	B •						•		F			•									308-425	
		237-296		•							F				•			•	•	•		Silver Plus	308-425	
		238-906		•					•		F				•			•	•	•		Silver Plus	308-425	
<b>KING 68:1</b>																								
6120 psi (42.2 MPa, 422 bar) 2.9 gpm (11.0 lpm)		236-461	B •								F			•									308-476	
		237-404	B •						•		F			•									308-476	
		238-135		•							F				•			•	•	•		510 Gun	308-476	
		238-905		•					•		F				•			•	•	•		510 Gun	308-476	
<b>PREMIER 74:1</b>																								
7400 psi (51 MPa, 510 bar) 4.2 gpm (15.9 lpm)		236-489	B •								F			•				•					308-415	
		237-158		•							F				•			•	•	•		510 Gun	308-415	

\*Stainless steel 304 or better, all wetted parts.  
All other models SevereDuty™ (SST/CS).  
\*\*Voltage  
200v available in SE Asia only  
120v, 240v, 480v available in North America only

**Suction Kit:**  
All HD cart packages . . . Standard 5 gal. (18.9 liter) siphon tube  
All wall packages . . . . . Standard 55 gal. (220 liter) siphon tube  
All LD cart packages . . . . . Optional 5 gal. (18.9 liter) siphon tube

# Accessories

## Whip Hoses

Maximum working pressure: 3000 psi (20.7 MPa, 207 bar).

1/4 npt(m) x 1/4 npsm(f). CS wetted fittings.

**236-134** 1/8 in. x 3 ft. (3 mm x 0.9 m)

**236-135** 1/8 in. x 6 ft. (3 mm x 1.8 m)

Maximum working pressure: 4100 psi (28 MPa, 280 bar).

1/4 npsm(fbe). SST wetted fittings.

**239-069** 3/16 in. x 23.6 in. (4.7 mm x 0.6 m)

**239-108** 1/4 in. x 23.6 in. (6.3 mm x 0.6 m)

Maximum working pressure: 4100 psi (28 MPa, 280 bar).

1/4 npsm(fbe). CS wetted fittings.

**238-708** 3/16 in. x 23.6 in. (4.7 mm x 0.6 m)

**238-709** 3/16 in. x 39.4 in. (4.7 mm x 1 m)

**238-822** 1/4 in. x 23.6 in. (6.3 mm x 0.6 m)

**239-082** 3/16 in. x 39.4 in. (4.7 mm x 1 m)

## Fluid Hoses

Maximum working pressure: 4100 psi (28 MPa, 280 bar).

1/4 npsm(fbe). CS wetted fittings.

**238-711** 3/16 in. x 16.4 ft. (4.7 mm x 5 m)

**238-712** 3/16 in. x 24.6 ft. (4.7 mm x 7.5 m)

**238-713** 3/16 in. x 50 ft. (4.7 mm x 15 m)

**238-826** 1/4 in. x 24.6 ft. (6.3 mm x 7.5 m)

**238-827** 1/4 in. x 50 ft. (6.3 mm x 15 m)

Maximum working pressure: 4100 psi (28 MPa, 280 bar).

1/4 npsm(fbe). SST wetted fittings.

**239-107** 1/4 in. x 24.6 ft. (6.3 mm x 7.5 m)

**239-110** 1/4 in. x 32.8 ft. (6.3 mm x 10 m)

**239-111** 1/4 in. x 50 ft. (6.3 mm x 15 m)

Maximum working pressure: 5000 psi (34 MPa, 345 bar).

CS wetted fittings.

**238-385** 1/4 in. x 24.6 ft. (6.3 mm x 7.5 m)

**238-396** 3/8 in. x 50 ft. (9.5 mm x 15 m)

Maximum working pressure: 7400 psi (50 MPa, 503 bar)

**237-072** 3/8 in. x 50 ft. (9.5 mm x 15 m)

**237-070** 1/4 in. x 6 ft. (6.3 mm x 1.8 m)

## 224-040 Pump Runaway Valve

Maximum working pressure: 120 psi (0.8 MPa, 8.4 bar). Inlet and outlet: 3/4 npt(f).

## 238-591 Silver Plus Gun

Includes HD RAC IV Tip Guard and 525 SwitchTip. Please reference the Silver Plus Airless Spray Gun data sheet, 305-796 for additional gun models and tip selection chart.

## 236-995 Model 510 Gun

Includes HD RAC IV Tip Guard and 527 SwitchTip. Please reference the Model 510 Airless Spray Gun data sheet, 305-797 for additional gun models and tip selection chart.

## Fluid Swivels

**189-018** Maximum working pressure: 5000 psi (35 MPa, 350 bar). SST. 1/4 npt(m) x 1/4 npsm(f).

**236-987** Maximum working pressure: 7400 psi (50.3 MPa, 503 bar). SST. 1/4 npsm(f) x 1/4 npt(m).

## 239-394 Fluid Swivel/Filter

SST. 100 mesh. 1/4 npt(m) x 1/4 npsm(f).

## Fluid Filters

**239-060** Maximum working pressure: 5000 psi (35 MPa, 350 bar). CS. 60 mesh.

**239-063** Maximum working pressure: 5000 psi (35 MPa, 350 bar). SST. 60 mesh.

**237-069** Maximum working pressure: 7400 psi (50.3 MPa, 503 bar). CS. 60 mesh.

## Replacement Screens

**238-435** 30 mesh

**238-437** 60 mesh

**238-439** 100 mesh

## Fluid Heaters

Maximum working pressure: 4000 psi (27.2 MPa, 272 bar). SST.

**220-522** 120v

**220-523** 240v

**220-524** 480v